



ECLO EXPRESSTHERMO

Simple and reliable temperature and humidity monitoring!

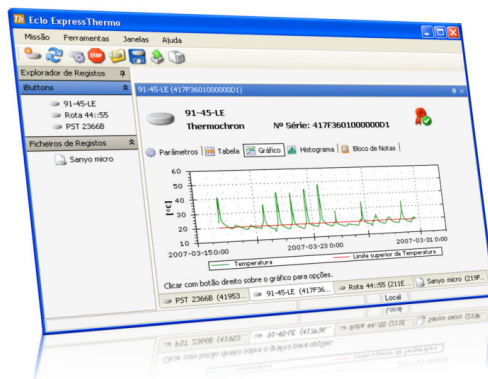
eclo

Management software for Thermochron®, Hygrochron® and iBTag® data loggers.

BENEFITS

- User friendly interface for ease of use.
- Two versions to satisfy different user profiles.
- Customized printed reports*.
- Direct exporting to Excel.
- Optional modules to specific applications*.

* - version dependent



SUMMARY

Eclo ExpressThermo it's a management software for Thermochron®, Hygrochron® and iBTag® data loggers. These loggers are suitable for applications of transport and storage of temperature and humidity sensitive products.

The user friendly interface, allows the user to program the log parameters, download the collected data, analyse it and manage all the information.

Eclo ExpressThermo is available in two versions - Basic and Professional – to satisfy different user profiles and requirements.

The Basic version includes the main features to setup the data loggers and analyse the collected data, including printed reports and direct exporting to Excel.

The Professional version, besides those features, includes advanced tools to analyse the data from several loggers, statistics, time based interval analysis, customizable reports and optional modules suitable for specific applications.

OPTIONAL MODULES

There are available several optional modules to use Eclo ExpressThermo for specific applications.

- Thermal treatment validation
- Thermal mapping and studies
- Concrete curing
- CFR21 part 11 compliant records

Please refer to the specific application datasheet for detailed information.



CUSTOMIZED REPORTS

Eclo ExpressThermo generates reports with log data. The report contents can be selected before printing, according to the user needs. The selectable areas are: mission summary, log graph, log table and scratchpad memory

The Professional version includes an editor to allow the end-user to completely format the reports. These can be minor changes to the report such as the formatting to match the company forms, the layout of the table or the font. New images, such as the company logo, can be added if required.

DIGITAL CERTIFICATE

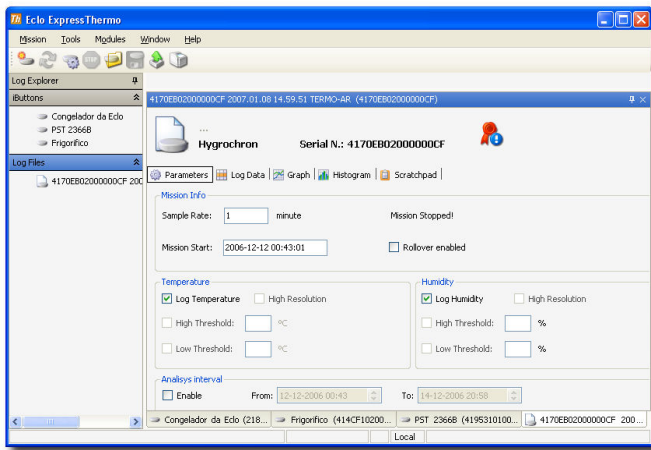
The temperature/humidity log saved in the Thermochron®/Hygrochron®/iBTag® memory can not be altered from the outside of the equipment. Nevertheless, the user may require that, from the moment the log starts until the product is received the parameters and the clock are not changed by unauthorized personal.

When a log is programmed a digital certificate is generated and stored in the data logger memory, travelling with the product.

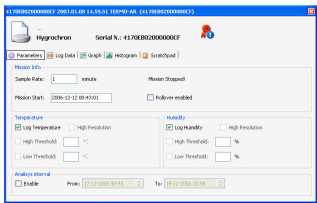
At any intermediary check-point or at destination, whenever a communication occurs with the data logger, the digital certificate will be verified and validated. If it's invalid or the log settings have been changed, the user is informed of that and he can take appropriate measures.

EXPRESSTHERMO PROFESSIONAL

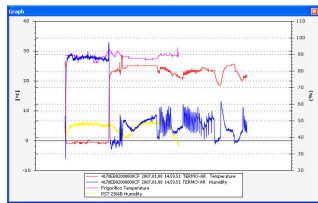
ExpressThermo Professional is feature rich, empowering the user with several tools to ease the log analysis, the programming and information management. It targets advanced users that need to fully exploit the ThermoChron®, HydroChron® and iBTag® features. The optional modules add extra features to suit specific applications.



Main window



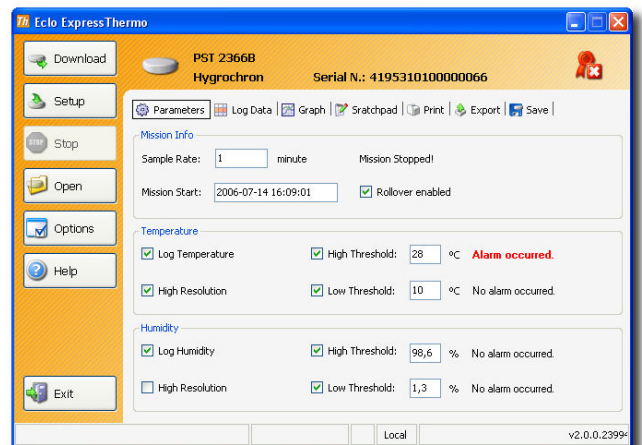
Log window



Simultaneous graphs

EXPRESSTHERMO BASIC

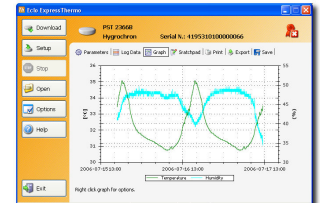
ExpressThermo Basic is characterized by an extraordinarily intuitive and user friendly interface with all information presented in a single window. It targets users that need just the basic program and analysis features.



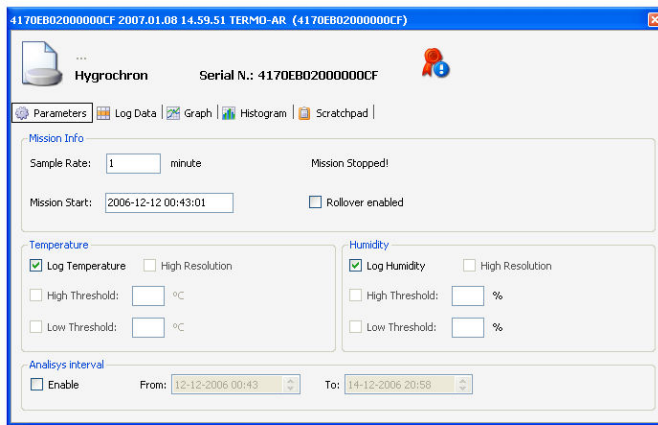
Main windows with settings, log table, graph and options

Date/Time	Temp (°C)	Humidity (%)
2007-04-12 02:30:00	42.00	98.60
2007-04-12 02:30:05	42.00	98.60
2007-04-12 02:30:10	42.00	98.60
2007-04-12 02:30:15	42.00	98.60
2007-04-12 02:30:20	42.00	98.60
2007-04-12 02:30:25	42.00	98.60
2007-04-12 02:30:30	42.00	98.60
2007-04-12 02:30:35	42.00	98.60
2007-04-12 02:30:40	42.00	98.60
2007-04-12 02:30:45	42.00	98.60
2007-04-12 02:30:50	42.00	98.60
2007-04-12 02:30:55	42.00	98.60
2007-04-12 02:31:00	42.00	98.60

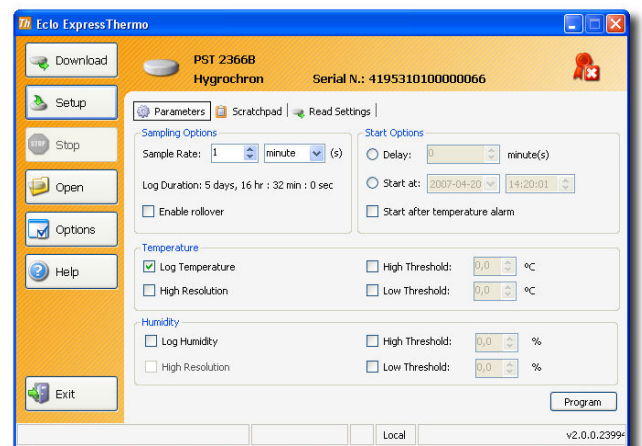
Log data table



Log graph



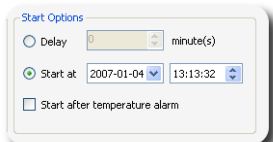
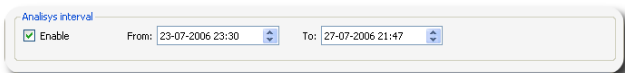
Log settings



New log setup parameters window

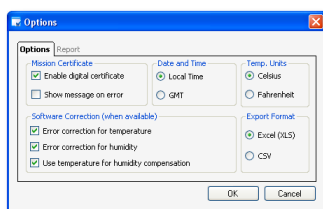
OTHER FEATURES

Using the interval analysis, the user can focus on a specific period to analyse discarding the non relevant data.

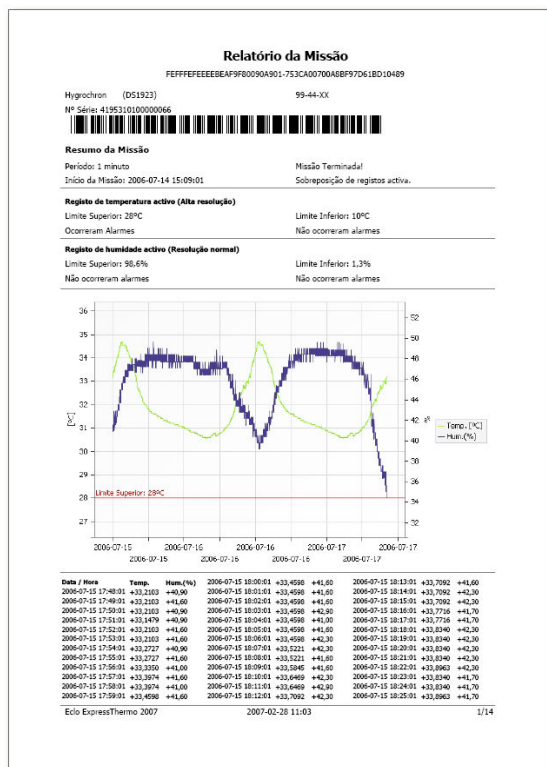


It's easy to program the log start to a determined date and time, just select the appropriate option in the setup window.

The user is not bothered with unnecessary configuration options. As culture specific settings are taken directly from Windows setting. More specific settings, such as temperature units, or the time zone are user configurable.



The report content is selected by the user before printing, allowing it to include only the information it requires. The reports include a digital signature to allow on-line verification of the log parameters with a tool available in Eclo web site.



VERSION COMPARISON

The following table presents a feature comparison between the features available with each ExpressThermo version.

Feature	Basic	Pro	Viewer
View log settings	✓	✓	✓
Log data table and graph	✓	✓	✓
Graph window	✓		✓
Multiple graph analysis and overlap		✓	
Log statistic (max, min, average, st. dev.)		✓	
Histogram		✓	
Analysis interval selection		✓	
Simultaneous comparison of several logs		✓	
Direct export to Excel, CSV	✓	✓	
Log data saved to file	✓	✓	✓
Log start programming by date and time	✓	✓	
Flash setup using the last log parameters and settings	✓	✓	
Multiple logger programming using the same parameters	✓	✓	
Log settings templates		✓	
Scratchpad edition available	✓	✓	✓
Direct report generation (printer, PDF, HTML e e-mail)	✓	✓	✓
Report contents and paper format selection	✓	✓	✓
Customized report layout and format including text and images		✓	
Dew point direct calculation (Hydrochron® only)		✓	
Time zone selection (local/GMT)	✓	✓	✓
Temperature units: °C/°F	✓	✓	✓
Date/time and numeric formats according to Windows definitions	✓	✓	✓
Automatic samples correction and compensation (according to model)	✓	✓	✓
Digital log program certificate (optional)	✓	✓	✓
Optional modules for specific applications		✓	